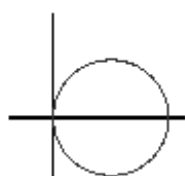
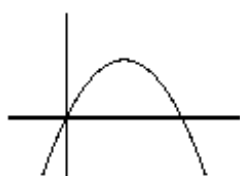




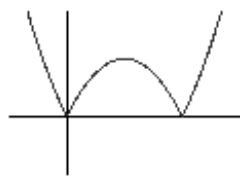
18. Which of the following could be part of the graph of the curve $y^2 = x(2 - x)$?



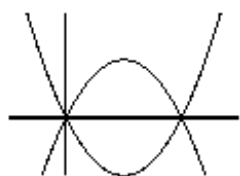
A



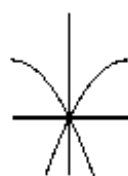
B



C



D



E

0988



©UKMT

-
18. A We have $y^2 = x(2 - x)$. Now $y^2 \geq 0$ for all real y hence $x(2 - x) \geq 0$. Hence $0 \leq x \leq 2$. In fact we can rewrite the equation as $(x - 1)^2 + y^2 = 1$; so this is a circle of radius 1 with centre $(1, 0)$.