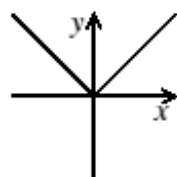




19. The graph of  $y = |x|$  is shown alongside.

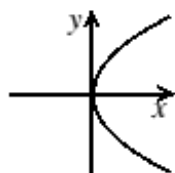
Which of the following could be a sketch of the graph of  $y = x|x|$ ?



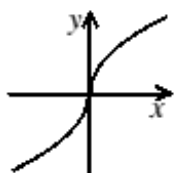
A



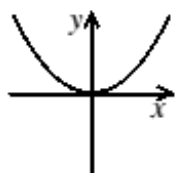
B



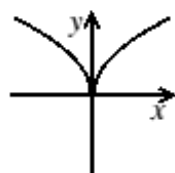
C



D



E



0589



©UKMT

- 
19. A When  $x \geq 0$ ,  $|x| = x$ , so  $x|x| = x^2$ ; when  $x < 0$ ,  $|x| = -x$ , so  $x|x| = -x^2$ .  
Only graph A has the same shape as the graph of  $y = x^2$  for  $x \geq 0$  and the same shape as the graph of  $y = -x^2$  for  $x < 0$ .